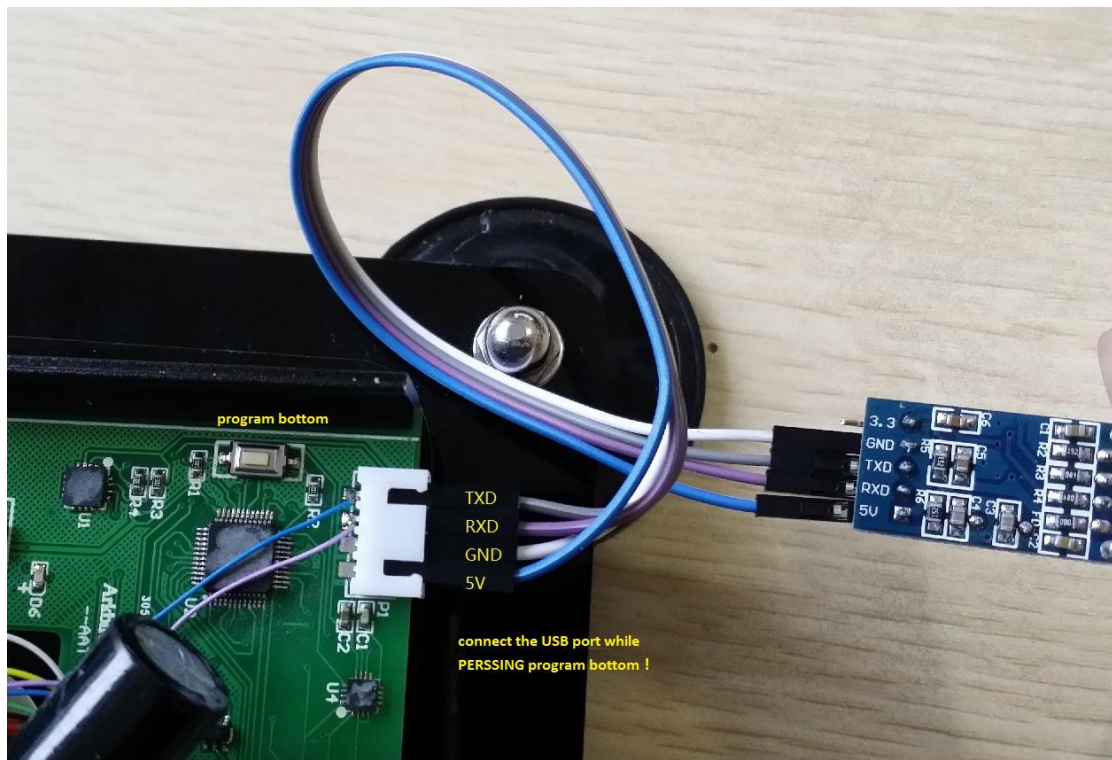




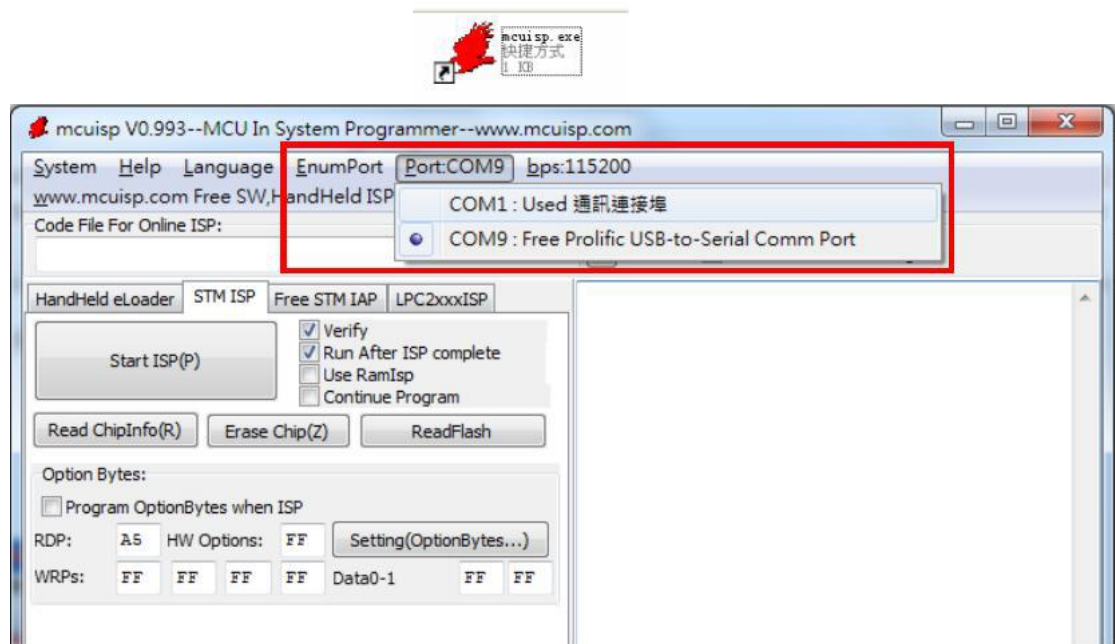
Arkbird Firmware Update Instruction

1. Please install" USB to TTL" device driver first. (for PL-2303HX).
2. Connecting Ground module to" USB-TTL" device. There are **TX, RX, GND** and **5V** pins on Arkbird (see pic.), please connect these four pins to the corresponding pin on USB-TTL device, that is TX to TX, RX to RX. (If you use your own USB-TTL device, sometimes TX should be connected to RX and RX should be connected to TX. If failed to connect to computer, please do cross-check).

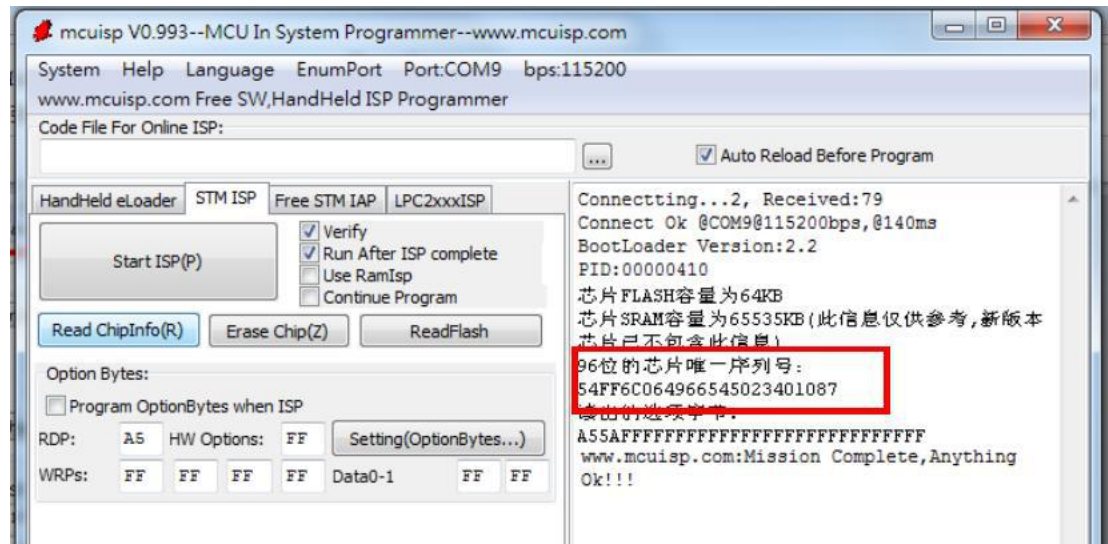
Connect wires referring to the graph, **connect the USB port while PERSSING program bottom**



3. Open Mcuisp software, and click “EnumPort” (see pic.).



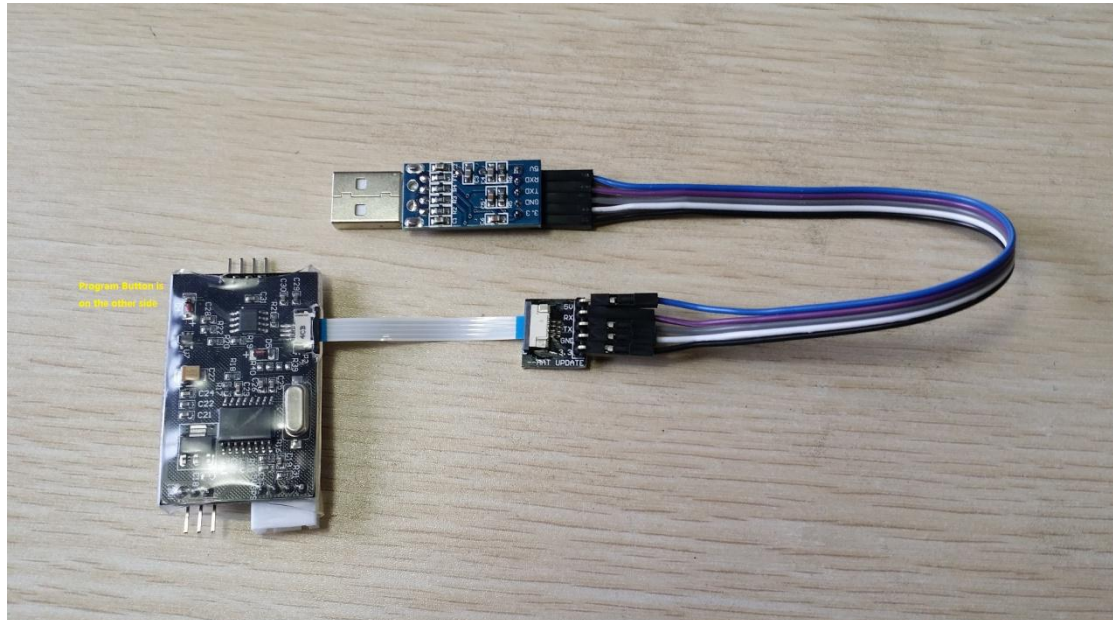
4. Click “Read ChipInfo”(see pic.) to get Ground ID Number (The ID Number should be 12 numbers like “54FF6C064966545023401087” shown in the picture below) .



5. Read the airborne module's ID

Connect wires referring to the graph, **connect the USB port while PERSSING program bottom**, which is on the other side of the board

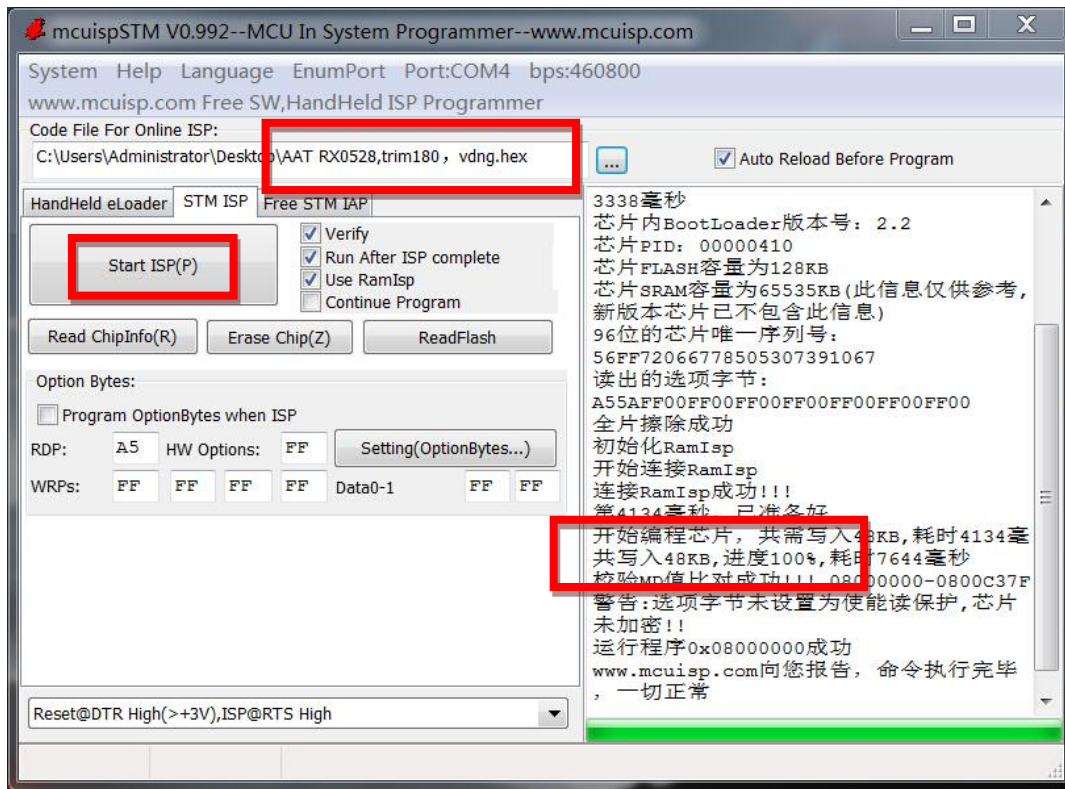
Read the airborne ID as previous methods



6. Please mail the unique 2 ID Number to **arkbird@foxmail.com**, Note the id is **AAT Ground** or **AAT airborne** module, we will provide you two new file within 2 working days.

when authorized. Do not enter to next step before receiving the new file.

7. Select the .hex file and press "Start ISP", to update corresponding Ground and Airborne module



If there is problem with updating progress, re-connect the usb-device with Program Button Pressed.

Try re-install the Device Driver, or change a computer with Win7 OS.

////////////////////////////////////

V1.0712

Issue that may occur:

1. Searching no COM PORT :

Reset com port on computer, or re-install USB-TTL device driver (for PL-2303HX) .

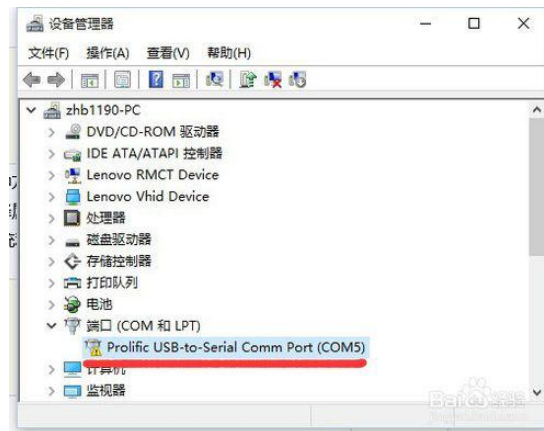
2. mcuisp is stuck at "Connectting...." and kept counting down, failed to connect:

The USB-TTL device may not be able to do write processing, please change the a computer to test.

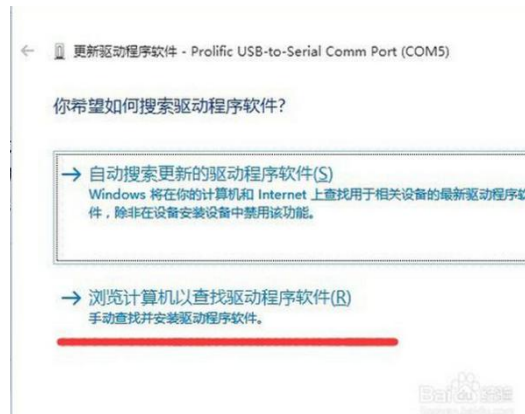
3. In Win10 OS, if you are unable to install the driver

Select the right click menu of “This PC”, open the Device Manager

You can see an exclamation mark in the corresponding driver of PL2303 COM



Right-click the device with exclamation mark, select “update the driver”,
Select “manually search and install the driver”



Select “select from the list of computer drivers”. Select the driver with version “3.0.1.0”, then
click the next step to wait for the update of driver and readily use it.



